



Technical Requirements for Laptops in Mobile Test Centers

<p>Warning</p> 	<p>On January 14, 2020, Pearson VUE will no longer provide support for Pearson VUE software installed on Windows 7 operating systems, or any 32-bit operating systems.</p> <p>All existing sites must upgrade to Windows 10 64-bit OS for all test center equipment prior to January 2020. Starting January 1, 2019, all new test centers are required to install on Windows 10 OS.</p>
---	--

Some test centers may wish to set up a mobile lab for administering and delivering exams. Examples of this type of test center might include setting up exam delivery at a conference, or following a training session. In a standard test center configuration, only desktop workstations are permitted. This restriction is inconvenient for mobile test centers. To accommodate mobile test centers, Pearson VUE has established minimum system requirements for using laptops in these mobile test centers.

This document describes the minimum technical requirements for installing the Pearson VUE Testing System (VTS) software on laptops in mobile test centers. The VTS software may be installed in one of two configurations: **Workgroup scenario** or **Server scenario**. The hardware and software must meet Pearson VUE's minimum requirements as shown in [System Requirements](#) on page 5.

Warning



Laptops are not permitted in standard fixed location Pearson VUE testing centers. These technical requirements only apply to mobile testing centers using laptops for administration and exam delivery.

If your site is installing in a **Workgroup scenario** you are limited to no more than 15 exam Delivery workstations. If you are installing on more than 15 exam Delivery workstations you must use a **Server scenario**, which requires a **Windows server OS**.

The following items are strictly prohibited:

- **Mac** hardware running any operating system
- **Virtual environments** in any form
- **Laptops are strictly prohibited as servers**

Any Windows user account that interacts with the VTS software on the **Server, Administration, Proctor** or **exam Delivery workstation** is **required** to have **local administrator rights** on that workstation. This includes both installing and running the VTS software.

Workgroup scenario installation

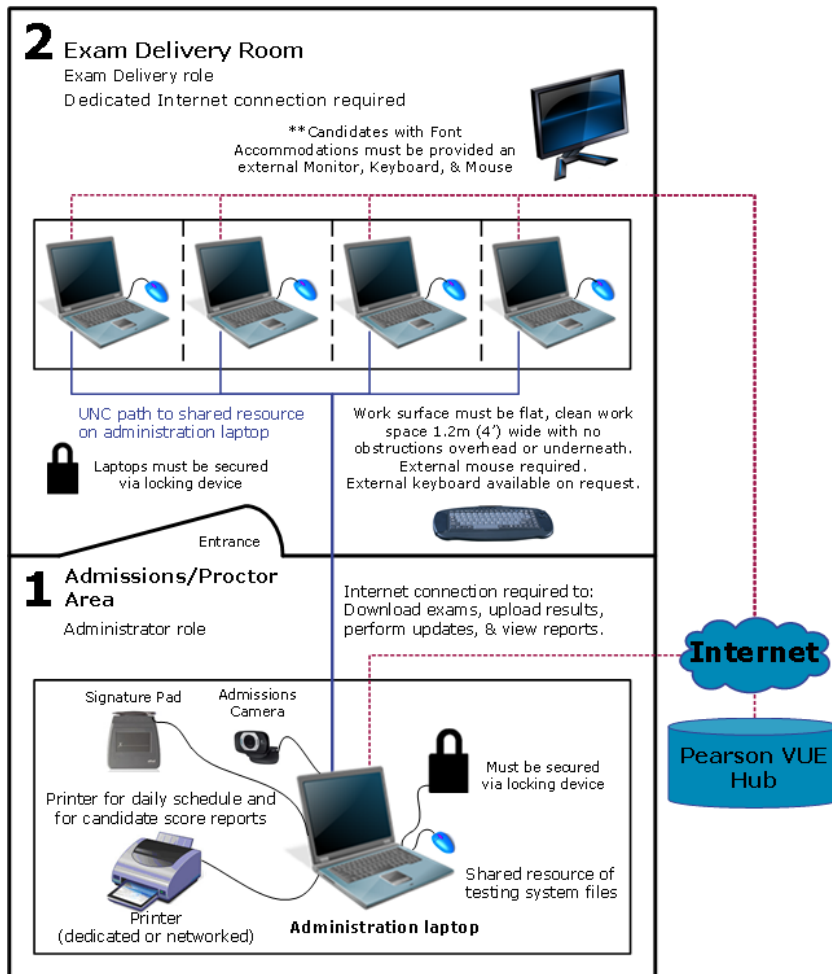
In a Workgroup scenario installation, exam Delivery laptops are connected through a local area network (LAN) or workgroup to the Administration laptop which provides shared file storage. This is illustrated below.

Warning



A Workgroup scenario may only use up to 15 exam Delivery machines. If you will be installing more than 15 workstations, you must use a Server scenario shown on the following page.

Pearson VUE Authorized Center – Mobile Laptop Lab
Workgroup Scenario
Multiple computers workgroup/network



Warning



Laptops may only be used as exam Delivery, Administration and Proctor machines. **Laptop Servers are strictly prohibited.**

Server Scenario Installation

In a Server scenario installation, all exam Delivery laptops are connected through a LAN, and a file server provides shared file storage. This is illustrated below. (Server scenario refers to a setup type and is not related to an Operating System.)

Warning

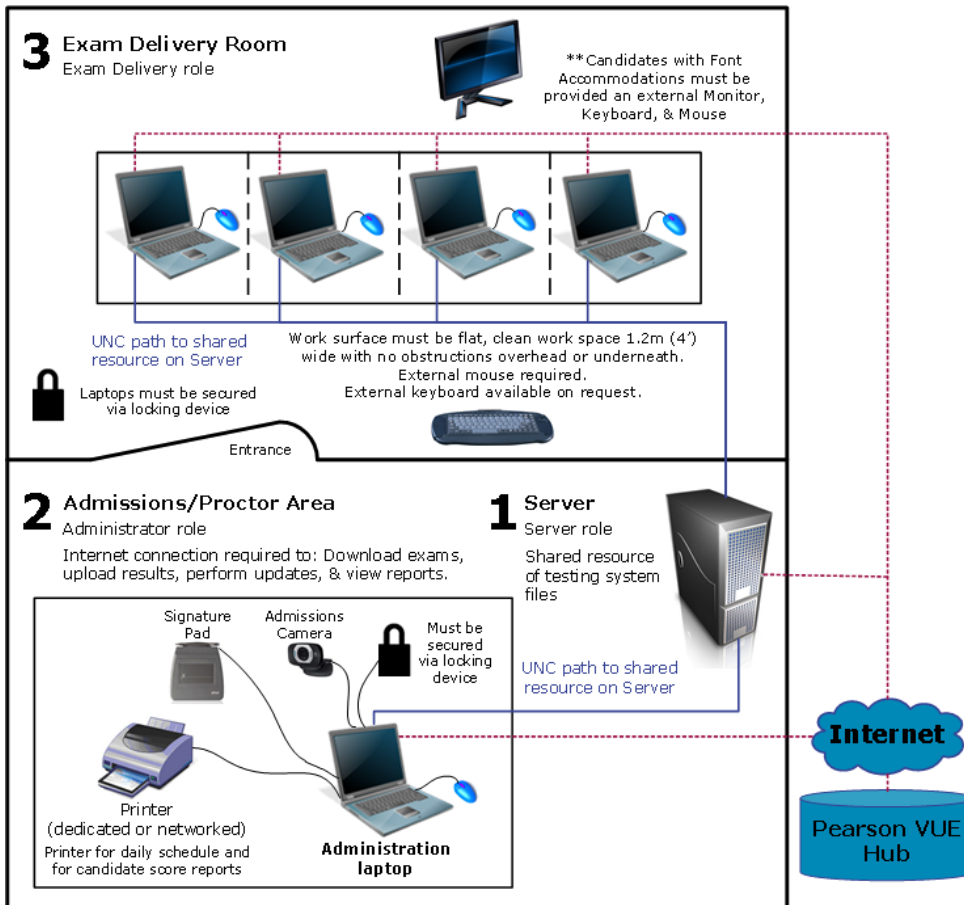


You must use a **Server** scenario if you have more than **15 exam Delivery laptops**. A server operating system, such as Server 2008 R2 or 2012 R2, is required for more than 15 exam Delivery laptops.

Laptops may be used in a Server scenario if you connect to a **desktop server**. Laptops may only be used as exam Delivery, Administration and Proctor machines. **Laptop Servers are strictly prohibited.**

Pearson VUE Authorized Center – Laptop Lab

Server Scenario
Multiple computers
local area network (LAN)



System Requirements

Effective **August 1, 2018**, the following pages list the minimum system requirements for installing and running the Pearson VUE Testing System on laptops in a mobile test center. ***Pearson recommends purchasing equipment that meets or exceeds the Recommended Specifications.*** The minimum requirements will change periodically based on the needs of our exam sponsors.

Hardware configuration

All-in-one PC's are permitted as long as they meet the minimum Technical Specification and do not have a Touch screen. Pearson VUE highly recommends that All-in-one PC's meet the Recommended Technical Specifications.

Software licenses

All test centers are required to have Windows operating systems that have completed online activation. Application software installed on all exam Delivery laptops must also have current licensing. Windows Operating Systems must pass Genuine Windows Validation.

Network configuration

It is **strongly recommended** that all machines with VTS Software installed remain in the same domain or workgroup, VLAN, and subnet. Network configurations that do not follow this guideline may experience decreased exam delivery performance. You may be asked to make changes to your network configuration to comply with this guideline as part of problem resolution.


Internet bandwidth

Some exam deliveries will require an internet connection. For Internet Based Tests (IBT) a minimum base connection speed of **1 Mbps down/up** is required. Additional bandwidth may be required for more than 10 simultaneous IBT exam deliveries.

Pearson VUE specific hardware

Some exams may require the use of test center admissions equipment. Please consult with your Pearson VUE representative to determine if these components are required for your test center. If required, these components may be purchased from Pearson VUE or a third-party source.

Requirement	Administration Workstation
Web Camera	Logitech HD Webcam C615 or Logitech Pro 9000
Signature Device	ePadLink: ePad Signature Pad – Model VP9801

Note  Pearson VUE strongly recommends purchasing 2 web cameras. If the first camera breaks down you will not be able to deliver any more exams until a replacement is in place.

Monitors – Exam Delivery

Requirement	
Monitor	<ul style="list-style-type: none"> • 15.6" or larger for laptops /17" or larger for external monitors • Must allow for the following display resolution settings: <ul style="list-style-type: none"> • 1280 x 1024 • 1024 x 768 • External monitor must be connected to the computer using DVI, DisplayPort, or HDMI
Desktop Graphics Adapter	<ul style="list-style-type: none"> • Exam Delivery workstations must have a graphics adapter that supports GPU Scaling (ability to Maintain Aspect Ratio) • Exam Delivery workstations must have the GPU Scaling feature enabled in the graphics adapter software • The latest version of graphics drivers must be installed

External peripherals for laptops

External mouse

Because many candidates are not comfortable using a touchpad mouse, this could negatively affect the results of their exam. Therefore, an **external mouse is required for every exam Delivery laptop**.

External keyboard

Some candidates are not comfortable typing on a laptop keyboard and this could negatively affect the results of their exam. Therefore, **external keyboards must be available to candidates if they request one**.



Note If a candidate has Font Accommodations, they must automatically be provided with an external keyboard.

External monitor

Candidates that have **Font Accommodations must automatically be provided with an external monitor, keyboard and mouse**.

Administration and Proctor laptop

	Minimum Required	Recommended Specifications
Operating System	Windows 10 Professional or Enterprise (64-bit) **Windows 7 SP1 Professional or Enterprise (64-bit) ** New sites are not allowed to install on Win 7 or any 32-bit OS starting Jan 2019	
Processor	<i>Intel:</i> i3 or higher <i>AMD:</i> Phenom II series, FX-4000 series or newer	<i>Intel:</i> i5-series
	Note: CPU must have a minimum of two cores (dual-core)	
RAM	2 GB of RAM	4 GB of RAM or more
Hard Drive	20 GB free disk space in NTFS format Minimum 7200 rpm HDD required	50 GB free disk space in NTFS format Solid State Disk (SDD)

	Minimum Required	Recommended Specifications
Graphics Adapter	Video Adapter must support DirectX 10 or higher. Latest drivers installed. 128 MB of dedicated Video RAM.	Video Adapter must support DirectX 11 or higher. Latest drivers installed. 256 MB dedicated Video RAM or more.
Display	Display must be 14" or larger .	17" external monitor or larger
Mouse & Keyboard	<ul style="list-style-type: none"> Built in English QWERTY Keyboard Built in Touch Pad Mouse 	<ul style="list-style-type: none"> External English QWERTY Keyboard External 2 Button Wheel Mouse
USB Ports	2 available USB 2.0 ports for: <ul style="list-style-type: none"> Signature Pad admissions equipment Camera admissions equipment 	4 available USB 2.0 ports for: <ul style="list-style-type: none"> English QWERTY Keyboard External 2 Button Wheel Mouse Signature Pad admissions equipment Camera admissions equipment
Network Connection	100 Mbps Full Duplex WIRED connection to the network switch.	1 Gbps Full Duplex WIRED connection to the network switch.
	Strongly Recommended: All machines with VTS Software installed should remain in the same domain or workgroup, VLAN, and subnet.	
Internet Connection	See Internet bandwidth requirements above.	
Internet Browser	Internet Explorer 11 and Microsoft Edge	
Printer	600 DPI Laser Printer	
Additional Software	<p>.NET 4.0 is installed with the VTS software.</p> <p>If installing on Windows 10, .NET 3.5 must be enabled on Administration/Proctor laptop to complete the VTS installation.</p> <p>All workstations must have Anti-Virus software installed with a current update.</p>	
Additional Notes	<ul style="list-style-type: none"> The Administration laptop must be physically secured at all times via Cable Lock or other locking device The Test Administrator should be the only one that can remove the locking device from the Administration laptop Candidates must not have free access to the Administration laptop at any time Windows 10/7 allows for up to 15 simultaneous exam deliveries The Windows account used to install the VUE Testing System Platform must have Administrative rights to properly install and update the software 	

Exam Delivery laptops

	Minimum Required	Recommended Specifications
Operating System	Windows 10 Professional or Enterprise (64-bit) **Windows 7 SP1 Professional or Enterprise (64-bit) ** New sites are not allowed to install on Win 7 or any 32-bit OS starting Jan 2019	
Processor	<i>Intel:</i> i3 or higher <i>AMD:</i> Phenom II series, FX-4000 series or newer	<i>Intel:</i> i5-series
	Note: CPU must have a minimum of two cores (dual-core)	
RAM	2 GB of RAM	4 GB of RAM or more
Hard Drive	10 GB free disk space in NTFS format Minimum 5400 rpm HDD required	50 GB free disk space in NTFS format 7200 rpm HDD or Solid State Drives (SDD) preferred
Graphics Adapter	Video Adapter must support DirectX 10 or higher. Latest drivers installed. 128 MB of dedicated Video RAM.	Video Adapter must support DirectX 11 or higher. Latest drivers installed. 512 MB dedicated Video RAM or more.
	Widescreen Laptops: must have a Graphics Adapter that supports GPU Scaling (sometimes called Maintaining Aspect Ratio).	
	Widescreen Laptops: must have the GPU Scaling feature enabled.	
Display	See Monitors requirements above.	
	Note: External 17" monitor or larger for candidates with Font Accommodations.	
Audio	Windows compatible audio playback capability	
Mouse & Keyboard	<ul style="list-style-type: none"> English QWERTY Keyboard External 2 Button Wheel Mouse 	
	Note: An external keyboard is required for candidates with Font Accommodations. Note: Sites must provide an external keyboard if candidate requests one.	
USB Ports	2 available USB 2.0 ports for: <ul style="list-style-type: none"> External 2 Button Wheel Mouse English QWERTY Keyboard (if requested or required by candidate) 	3 available USB 2.0 ports for: <ul style="list-style-type: none"> External 2 Button Wheel Mouse English QWERTY Keyboard 1 spare port
Network Connection	100 Mbps Full Duplex WIRED connection to the network switch.	1 Gbps Full Duplex WIRED connection to the network switch.
	Strongly Recommended: All machines with VTS Software installed should be in the same domain or workgroup, VLAN, and subnet.	

	Minimum Required	Recommended Specifications
Internet Connection	See Internet bandwidth requirements above.	
Internet Browser	Internet Explorer 11 required Microsoft Edge	
Printer	600 DPI Laser Printer	
Additional Software	<ul style="list-style-type: none"> • .NET 4.0 is installed with the VTS software. • If installing on Windows 10, .NET 3.5 must be enabled on exam Delivery laptop to complete the VTS installation • All workstations must have Anti-Virus software installed with a current update. 	
Additional Notes	<ul style="list-style-type: none"> • Delivery laptops MUST NOT be moved or mobile during exam delivery – a locking device may be necessary to prevent laptops from walking away. • An external Monitor, Keyboard, and Mouse are required for candidates with Font Accommodations. • The Windows account used to install the VUE Testing System Platform must have Administrative rights to install properly. • The Windows account profile logged into the exam Delivery laptop must have Administrative rights to launch the Delivery Manager software. 	

Server: file storage

The file storage server must be accessible to the Administration laptop, Proctor laptop, and all exam Delivery laptops. These requirements apply to Administration workstations with 1 – 15 exam delivery laptops, and to Servers with 15 – 30 exam delivery laptops.

	Required for 1 to 15 Exam Delivery Seats	Required for 15 to 30 Exam Delivery Seats
Operating System	<p>All Servers must be Desktop machines Windows 10 Professional or Enterprise (64-bit) **Windows 7 Professional SP1 (64-bit)</p> <p>Windows Server 2012 R2 with update (64-bit) Windows Server 2008 SP2/2008 R2 (64-bit) <i>(Windows Server Core is not currently supported)</i> ** New sites are not allowed to install on Win 7 or any 32-bit OS starting Jan 2019</p>	<p>All Servers must be Desktop machines Windows Server 2012 R2 with update (64-bit) Windows Server 2008 R2 (64-bit)</p>

	Required for 1 to 15 Exam Delivery Seats	Required for 15 to 30 Exam Delivery Seats
Processor	Intel: i3 or higher AMD: Phenom II series, FX-4000 series or newer	Intel: i5-series
	Note: CPU must have a minimum of two cores (dual-core)	
RAM	2 GB of RAM or more.	8 GB of RAM or more.
Hard Drive	SATA II Interface Standard or faster Interface Standard. 50 GB available disk space in NTFS format.	
Network	100 Mbps Full Duplex WIRED connection to the network switch.	1 Gbps Full Duplex WIRED connection to the network switch.
	<p>Pearson VUE strongly recommends that the server be dedicated to the VTS software to ensure the highest quality experience for candidates during exam delivery.</p> <p>Pearson VUE strongly discourages that the server provide additional services such as: domain controller, DHCP, SQL Server, WINS, etc.</p>	
Power	UPS is recommended.	
Internet Connection	See Internet bandwidth requirements above.	
Internet Browser	Internet Explorer 11 and Microsoft Edge	
Additional Software	Server must have Anti-Virus software installed with a current update. .NET 2.0 framework must be enabled.	
Additional Notes	The Windows account used to install the VUE Testing System Platform must have Administrative rights to install properly. Candidates should never have free access to the Server machine at any time.	

Prohibited on all laptops

	Administration Laptops	Delivery Laptops
Portable Computers	<p>Smartphones are strictly prohibited.</p> <p>Tablet devices are strictly prohibited (e.g., iOS, Android, and Windows 8).</p> <p>Netbooks and Chromebooks are strictly prohibited.</p> <p>Note: Laptops are strictly prohibited as servers.</p> <p>Note: Laptops with a "Tablet" mode are strictly prohibited from delivering exams while in Tablet mode.</p>	
Processor	Devices running Ultra Mobile Processors are strictly prohibited. This includes, but is not limited to Intel Atom , AMD NEO CPU lines, and ARM CPUs.	
RAM	Less than 2 GB on any workstation	
Hard Drive	<p>FAT32 File System</p> <p>Hard drives that spin at less than 5400 rpms (SSD are exempt)</p>	
Operating System	<ul style="list-style-type: none"> • Windows Server 2016 is strictly prohibited • Windows XP, Vista & Windows 8/8.1 (all versions) strictly prohibited • Windows Server Operating System strictly prohibited on exam Delivery laptops and are not supported on Administration laptops • Virtual environments are strictly prohibited (e.g., VMWare, Virtual PC, Citrix, Parallels, VirtualBox, etc.) • Mac OSX is strictly prohibited • Mac hardware running any Operating System is strictly prohibited • All Linux/Unix based Operating Systems are strictly prohibited 	
Graphics Adapter	<p>Any Graphics Adapter that does not support DirectX 10 or higher</p> <p>Any Graphics Adapter that has less than 128 MB of Video RAM</p>	
Monitor Display	Less than 14" display	<p>External monitors smaller than 17" are strictly prohibited.</p> <p>Dual monitors are strictly prohibited.</p> <p>Laptops: Any 16:9 aspect ratio display smaller than 15.4".</p>
	Touch Screen monitors are strictly prohibited on all workstations.	
USB	<p>USB 1.0/1.1 is strictly prohibited.</p> <p>Un-Powered USB Hubs are strictly prohibited.</p> <p>Portable computing devices such as, but not limited to, smartphones and tablets are strictly prohibited from being connected to the exam Delivery laptop during exam deliveries.</p>	
		USB Hubs are strictly prohibited on exam Delivery laptops.

	Administration Laptops	Delivery Laptops
Network Connection	<p>Wireless Networks of any kind are strictly prohibited.</p> <p>IPv6 is not currently supported.</p> <p>Novell Netware is not supported.</p> <p>Network Hubs are strictly prohibited.</p>	
Internet Connection	<p>SSL VPNs are strictly prohibited (e.g., Hotspot Shield)</p> <p>Dial-Up Internet Connections are strictly prohibited.</p>	
Internet Browser	<p>Only Internet Explorer 11 and Microsoft Edge are supported.</p> <p>No other web browsers are currently supported.</p>	
Additional Software	<p>Software that can be used to remotely access the delivery workstations during exam delivery is strictly prohibited.</p>	
Additional Notes	<p>It is strictly prohibited to install VUE Testing System Platform on any computer that does not have Anti-Virus software installed on it.</p>	