

PVTC Technical Requirements

About the Installation Scenarios

This document describes the minimum hardware requirements to install the Pearson VUE Testing System (VTS) software in a Pearson VUE Authorized Test Center. The VTS software may be installed in one of two configurations: **Workgroup scenario** or **Server scenario**. Whichever scenario is installed, the hardware and software must meet Pearson VUE's minimum requirements as shown in the [System Requirements](#) on page 4.

Warning



If your site is installing in a **Workgroup scenario** you are limited to no more than 15 exam delivery workstations. If you are installing on more than 15 exam delivery workstations you must use a **Server scenario**, which requires a **Windows server OS**.

The following items are strictly prohibited:

- **Mac** hardware running any operating system
- **Virtual environments** in any form
- **Laptops as exam delivery** workstations or as **Servers**

Note



Sites that will install Palm Vein admissions equipment must view the *"Install the Palm Vein Device"* topic in the Site Installation Guide for installation instructions.

Any Windows user account that interacts with the VTS software on the **Server, Administration, Proctor** or **exam delivery workstation** is **required** to have **local administrator rights** on that workstation. This includes both installing and running the VTS software.

Warning



On January 14, 2020, Pearson VUE will no longer provide support for Pearson VUE software installed on Windows 7 operating systems, or any 32-bit operating systems.

All existing sites must upgrade to **Windows 10 64-bit OS** for all test center equipment prior to January 2020. Starting **January 1, 2019**, all new test centers are required to install on Windows 10 OS.

PVTC Technical Requirements

Workgroup scenario installation

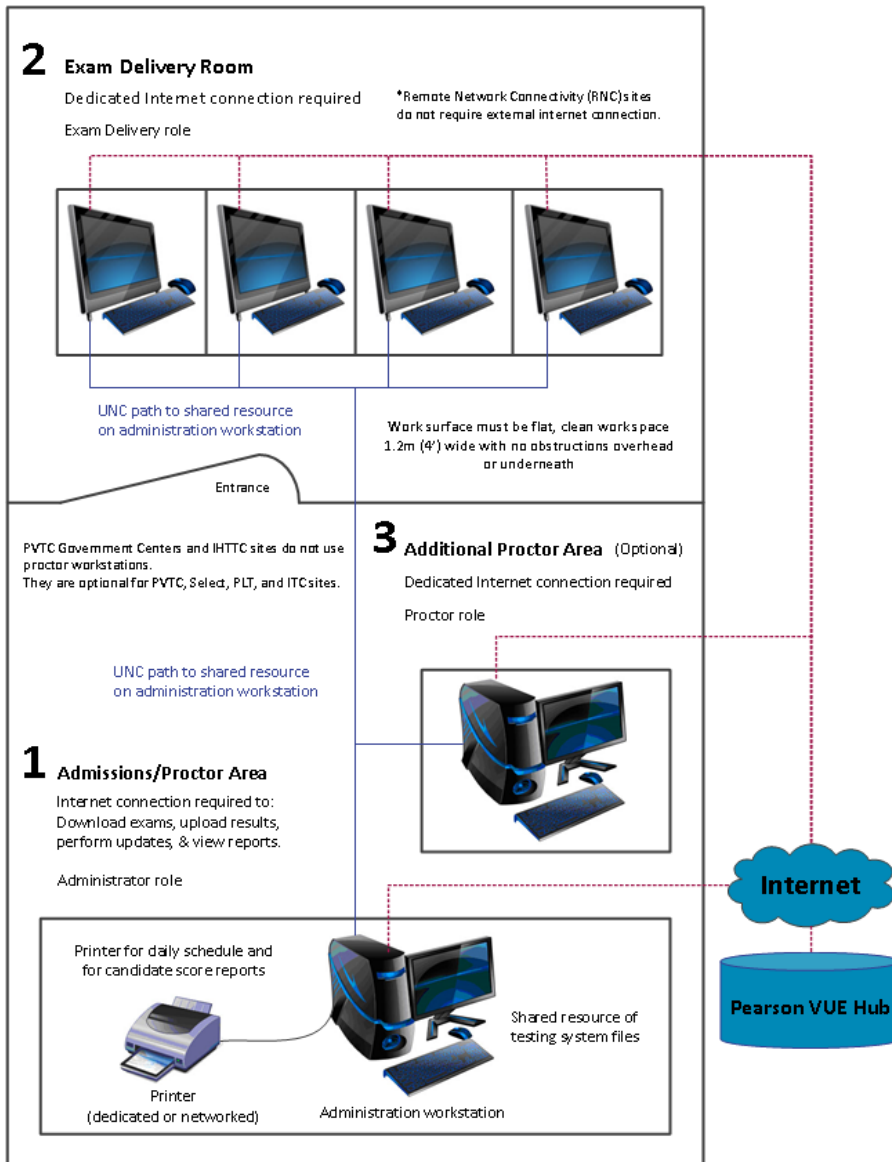
In a Workgroup scenario installation, exam delivery workstations are connected through a local area network (LAN) or workgroup to the Administration workstation which provides shared file storage. This is illustrated below.



A Workgroup scenario may only use up to 15 exam delivery workstations. If you will be installing more than 15 workstations, you must use a Server scenario shown on the following page.

Workgroup Scenario

Multiple computers workgroup/network



Server Scenario Installation

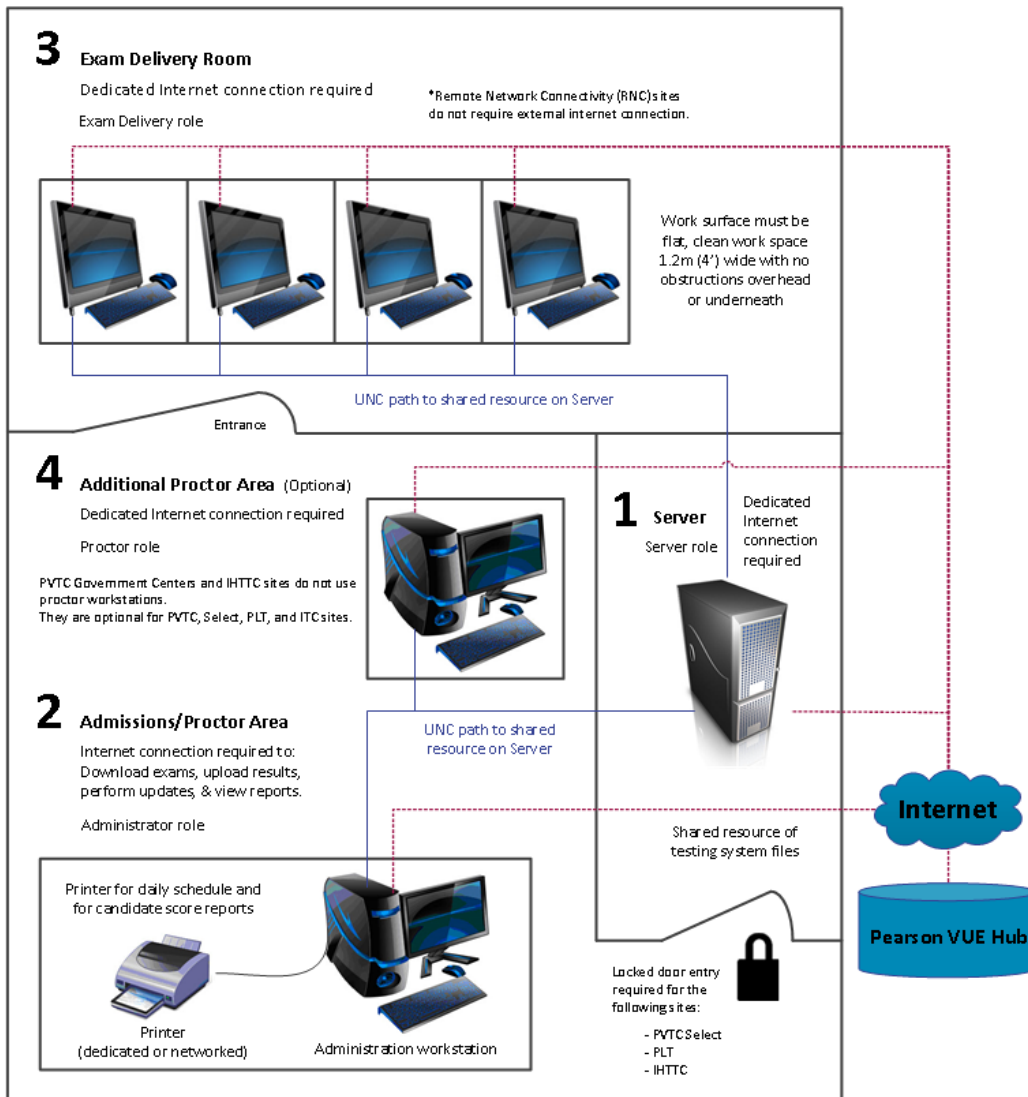
In a Server scenario installation, all exam delivery workstations are connected through a LAN, and a file server provides shared file storage. This is illustrated below. (Server scenario refers to a setup type and is not related to an Operating System.)



Warning You must use a **Server scenario** if you have more than **15 exam delivery workstations**. A server operating system, such as Windows Server 2012 R2 or 2008 R2, is required for more than 15 exam delivery workstations.

Server Scenario

Multiple computers
local area network (LAN)



System Requirements

Effective **August 1, 2018**, the following pages list the minimum system requirements for installing and running the Pearson VUE Testing System, and for operating as a test center. ***Pearson recommends purchasing equipment that meets or exceeds the Recommended Specifications.*** The minimum requirements will change periodically based on the needs of our exam sponsors.

Hardware configuration

All-in-one PC's are permitted as long as they meet the minimum Technical Specification and do not have a Touch screen. Pearson VUE highly recommends that All-in-one PC's meet the Recommended Technical Specifications.

Software licenses

All test centers are required to have Windows operating systems that have completed online activation. Application software installed on all exam delivery workstations must also have current licensing. Windows Operating Systems must pass Genuine Windows Validation.

Network configuration

It is **strongly recommended** that all machines with VTS Software installed remain in the same domain or workgroup, VLAN, and subnet. Network configurations that do not follow this guideline may experience decreased exam delivery performance. You may be asked to make changes to your network configuration to comply with this guideline as part of problem resolution.

Internet bandwidth

Some exam deliveries will require an internet connection. For Internet Based Tests (IBT) a minimum base connection speed of **1 Mbps down/up** is required. Additional bandwidth may be required for more than 10 simultaneous IBT exam deliveries.

Monitors – Exam Delivery

Requirement	
Monitor	<ul style="list-style-type: none"> • 17" or larger • Must allow for the following display resolution settings: <ul style="list-style-type: none"> • 1280 x 1024 • 1024 x 768 • Monitor must be connected to the computer using DVI, DisplayPort, or HDMI
Desktop Graphics Adapter	<ul style="list-style-type: none"> • Exam delivery workstations must have a graphics adapter that supports GPU Scaling (ability to Maintain Aspect Ratio) • Exam delivery workstations must have the GPU Scaling feature enabled in the graphics adapter software • The latest version of graphics drivers must be installed

Pearson VUE specific hardware

Some exams may require the use of test center admissions equipment. Please consult with your Pearson VUE representative to determine if these components are required for your test center. If required, these components may be purchased from Pearson VUE or a third party source.

Requirement	Administration Workstation
Web Camera	Logitech HD Webcam C615 or Logitech Pro 9000
Signature Device	ePadLink: ePad Signature Pad – Model VP9801



Note Pearson VUE strongly recommends purchasing 2 web cameras. If the first camera breaks down you will not be able to deliver any more exams until a replacement is in place.

PVTC Technical Requirements

Administration and Proctor workstations

	Minimum Required	Recommended Specifications
Operating System	Windows 10 Professional or Enterprise (64-bit) **Windows 7 SP1 Professional or Enterprise (64-bit) ** New sites are not allowed to install on Win 7 or any 32-bit OS starting Jan 2019	
Processor	<i>Intel:</i> i3 or higher <i>AMD:</i> Phenom II series, FX-4000 series or newer	<i>Intel:</i> i5-series
	Note: CPU must have a minimum of two cores (dual-core)	
RAM	2 GB of RAM	4 GB of RAM or more
Hard Drive	20 GB free disk space in NTFS format	50 GB free disk space in NTFS format
Graphics Adapter	Video Adapter must support DirectX 10 or higher. Latest drivers installed. 128 MB of dedicated Video RAM.	Video Adapter must support DirectX 11 or higher. Latest drivers installed. 512 MB dedicated Video RAM or more.
	All computers and monitors must be connected via DVI, DisplayPort, or HDMI.	
Display	17" monitor or larger	
Mouse & Keyboard	English QWERTY Keyboard <ul style="list-style-type: none"> 2 Button Wheel Mouse 	
USB Ports	4 available USB 2.0 ports for: <ul style="list-style-type: none"> English QWERTY Keyboard 2 Button Wheel Mouse Signature Pad admissions equipment Camera admissions equipment 	6 available USB 2.0 ports for: <ul style="list-style-type: none"> English QWERTY Keyboard 2 Button Wheel Mouse Signature Pad admissions equipment Camera admissions equipment 2 spare ports
	100 Mbps Full Duplex WIRED connection to the network switch.	
Network Connection	1 Gbps Full Duplex WIRED connection to the network switch.	
Internet Connection	See Internet bandwidth requirement above.	
Internet Browser	Internet Explorer 11 and Microsoft Edge	
Printer	600 DPI Laser Printer	
Additional Software	.NET 4.0 is installed with the VTS software. If installing on Windows 10 , .NET 3.5 must be enabled on the Administration/Proctor workstation to complete the VTS installation. All workstations must have Anti-Virus software installed with a current update.	

PVTC Technical Requirements

	Minimum Required	Recommended Specifications
Additional Notes	<p>Windows 10/7 allows for up to 15 simultaneous exam deliveries.</p> <p>Candidates must not have free access to the Administration or Proctor workstations at any time.</p> <p>The Windows account used to install the VUE Testing System Platform must have Administrative rights to properly install and update the software.</p>	

Exam Delivery workstation

	Minimum Required	Recommended Specifications
Operating System	<p>Windows 10 Professional or Enterprise (64-bit)</p> <p>**Windows 7 SP1 Professional or Enterprise (64-bit)</p> <p>** New sites are not allowed to install on Win 7 or any 32-bit OS starting Jan 2019</p>	
Processor	<p>Intel: i3 or higher</p> <p>AMD: Phenom II series, FX-4000 series or newer</p>	<p>Intel: i5-series</p>
	<p>Note: CPU must have a minimum of two cores (dual-core)</p>	
RAM	2 GB of RAM	4 GB of RAM or more
Hard Drive	10 GB free disk space in NTFS format	50 GB free disk space in NTFS format
Graphics Adapter	<p>Video Adapter must support DirectX 10 or higher. Latest drivers installed.</p> <p>128 MB of dedicated Video RAM.</p>	<p>Video Adapter must support DirectX 11 or higher. Latest drivers installed.</p> <p>512 MB dedicated Video RAM or more.</p>
	<p>All exam delivery workstations must have a Graphics Adapter that supports GPU Scaling (sometimes called Maintaining Aspect Ratio).</p> <p>All exam delivery workstations must have the GPU Scaling feature enabled.</p> <p>All computers and monitors must be connected via DVI, DisplayPort, or HDMI.</p>	
Display	See Monitors requirements above.	
Audio	Windows compatible audio playback capability.	
Mouse & Keyboard	<ul style="list-style-type: none"> English QWERTY Keyboard 2 Button Wheel Mouse 	
USB Ports	<p>2 available USB 2.0 ports for:</p> <ul style="list-style-type: none"> English QWERTY Keyboard 2 Button Wheel Mouse 	<p>4 available USB 2.0 ports for:</p> <ul style="list-style-type: none"> English QWERTY Keyboard 2 Button Wheel Mouse 2 spare ports
Network Connection	100 Mbps Full Duplex WIRED connection to the network switch.	1 Gbps Full Duplex WIRED connection to the network switch.
	<p>Strongly Recommended: All machines with VTS Software installed should be in the same domain or workgroup, VLAN, and subnet.</p>	

PVTC Technical Requirements

	Minimum Required	Recommended Specifications
Internet Connection	See Internet bandwidth requirements above.	
Internet Browser	Internet Explorer 11 required Microsoft Edge	
Printer	600 DPI Laser Printer	
Additional Software	<p>.NET 4.0 is installed with the VTS software.</p> <p>If installing on Windows 10, .NET 3.5 must be enabled on exam delivery workstation to complete the VTS installation.</p> <p>All workstations must have Anti-Virus software installed with a current update.</p>	
Additional Notes	<p>The Windows account used to install the VUE Testing System Platform must have Administrative rights to install properly.</p> <p>The Windows account profile logged into the exam delivery workstation must have Administrative rights to launch the Delivery Manager software.</p>	

Server: file storage

The file storage server must be accessible to the Administration workstation, Proctor workstation, and all exam delivery workstations. These requirements apply to Administration workstations with 1 – 15 exam delivery workstations, and to Servers with 15 – 30 exam delivery workstations.

	Required for 1 to 15 Exam Delivery Seats	Required for 15 to 30 Exam Delivery Seats
Operating System	<p>Windows 10 Professional or Enterprise (64-bit)</p> <p>**Windows 7 Professional SP1 (64-bit)</p> <p>Windows Server 2012 R2 with update (64-bit)</p> <p>Windows Server 2008 SP2/2008 R2 (64-bit)</p> <p><i>(Windows Server Core is not currently supported)</i></p>	<p>Windows Server 2012 R2 with update (64-bit)</p> <p>Windows Server 2008 R2 (64-bit)</p> <p>** New sites are not allowed to install on Win 7 or any 32-bit OS starting Jan 2019</p>
Processor	<p>Intel: i3 or higher</p> <p>AMD: Phenom II series, FX-4000 series or newer</p>	<p>Intel: i5-series</p>
	Note: CPU must have a minimum of two cores (dual-core)	

PVTC Technical Requirements

	Required for 1 to 15 Exam Delivery Seats	Required for 15 to 30 Exam Delivery Seats
RAM	2 GB of RAM or more.	8 GB of RAM or more.
Hard Drive	SATA II Interface Standard or faster Interface Standard. 50 GB available disk space in NTFS format.	
Network	100 Mbps Full Duplex WIRED connection to the network switch.	1 Gbps Full Duplex WIRED connection to the network switch.
	Pearson VUE strongly recommends that the server be dedicated to the VTS software, to ensure the highest quality experience for candidates during exam delivery. Pearson VUE strongly discourages that the server provides additional services such as: domain controller, DHCP, SQL Server, WINS, etc.	
Power	UPS is recommended.	
Internet Connection	See Internet bandwidth requirements above.	
Internet Browser	Internet Explorer 11 and Microsoft Edge	
Additional Software	Server must have Anti-Virus software installed with a current update. .NET 2.0 framework must be enabled.	
Additional Notes	The Windows account used to install the VUE Testing System Platform must have Administrative rights to install properly. Candidates should never have free access to the Server machine at any time.	

Prohibited on all workstations and servers

	Server/Administration/Exam Delivery Workstations
Portable Computers	Smartphones are strictly prohibited. Tablet devices are strictly prohibited (e.g., iOS , Android , and Windows 8). Netbooks and Chromebooks are strictly prohibited. Note: Laptops are strictly prohibited as exam delivery workstations or as Servers.
Processor	Devices running Ultra Mobile Processors are strictly prohibited. This includes, but is not limited to Intel Atom , AMD NEO CPU lines, and ARM CPUs.
RAM	Less than 2 GB on any workstation
Hard Drive	FAT32 File System

PVTC Technical Requirements

	Server/Administration/Exam Delivery Workstations
Operating System	<ul style="list-style-type: none"> • Windows Server 2016 is strictly prohibited • Windows XP, Vista & Windows 8/8.1 (all versions) are strictly prohibited • Windows Server Operating System is strictly prohibited on the exam delivery workstations and not supported on Administration workstations • Virtual environments are strictly prohibited (e.g., VMWare, Virtual PC, Citrix, Parallels, VirtualBox, etc.) • Mac OSX is strictly prohibited • Mac hardware running any Operating System is strictly prohibited • All Linux/Unix based Operating Systems are strictly prohibited
Graphics Adapter	<p>Any Graphics Adapter that does not support DirectX 10 or higher.</p> <p>Any Graphics Adapter that has less than 128 MB of dedicated Video RAM.</p>
Monitor Display	<p>Monitors smaller than 17" are strictly prohibited on exam delivery workstations.</p> <p>Dual monitors are strictly prohibited on exam delivery workstations.</p> <p>KVM switches are strictly prohibited on exam delivery workstations.</p>
USB	<p>USB 1.0/1.1 is strictly prohibited.</p> <p>Un-Powered USB Hubs are strictly prohibited.</p> <p>Portable computing devices such as, but not limited to, smartphones and tablets are strictly prohibited from being connected to the exam delivery workstation during exam deliveries.</p>
	<p>USB Hubs are strictly prohibited on exam delivery workstations.</p>
Network	<p>Wireless Networks of any kind are strictly prohibited.</p> <p>IPv6 is not currently supported.</p> <p>Novell Netware is not supported.</p> <p>Network Hubs are strictly prohibited.</p>
Internet Connection	<p>SSL VPNs are strictly prohibited. (e.g., Hotspot Shield)</p> <p>Dial-Up Internet Connections are strictly prohibited.</p>
Internet Browser	<p>Only Internet Explorer 11 and Microsoft Edge are supported.</p> <p>No other web browsers are currently supported.</p>
Additional Software	<p>Software that can be used to remotely access the delivery workstations during exam delivery is strictly prohibited.</p>
Additional Notes	<p>It is strictly prohibited to install the VUE Testing System Platform on any computer that does not have Anti-Virus software installed on it.</p>